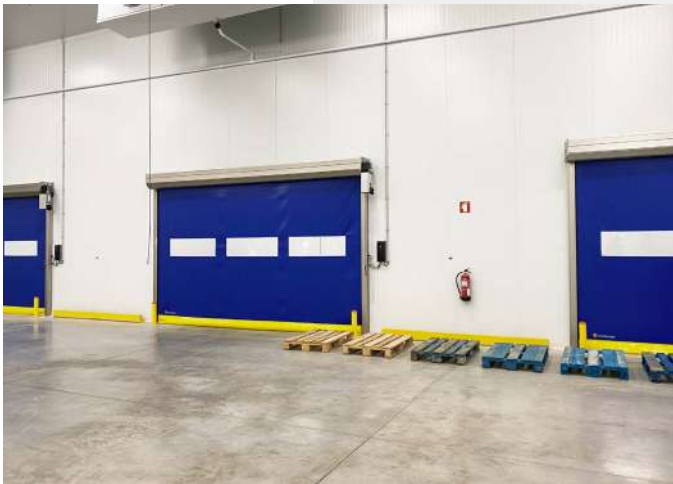


Data sheet

Self-repairing high speed roller door

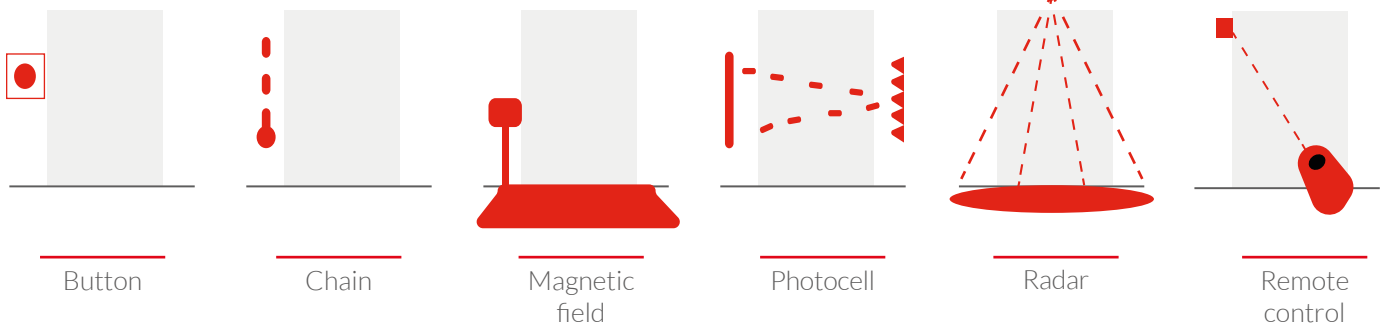
Self-repairing high-speed roller door



Kavidoors self-repairing high-speed roller doors provide a solution to the partitioning of work areas, both indoors and outdoors, with high traffic of people and vehicles with the need for quick opening and closing maneuvers.

Thanks to its self-healing function, if it receives an impact, the canvas comes off the guides without suffering any damage and then reverts back to its original position to continue working normally.

Opening options:



Options

- All elements in stainless steel (guides, lintel, console, feet and screws).
- Metallic motor cover.
- White lacquer profiles.
- Additional or custom sight glasses.
- Uninterruptible power supply single phase 1200w (UPS).
- Customized corporate canvas design.
- Motor in horizontal position.
- Refrigerator.



Structure

Made with **anodized aluminum lintel** or stainless steel.

Wall/floor fixings in stainless steel. Hidden cable system.

Safety

It has a photocell barrier IP67 2000H or 2500H transmitter-receiver. Interior/exterior emergency button panel.

It does not require a safety switch.

Motor

- Elektromaten.
- Supply voltage 3x230/400 VAC+PE, 05 CV, 160 rpm, IP54.
- Opening and closing speed: 1 m/s.
- Electronic limit switches or by encoder.
- Low noise level gears.



Canvas

PVC-Nylon interlocking canvas 1/8" thick and 950 gr/m² (0,2 lb/sq.ft).

Colors

We have a **wide variety of RAL** colors to meet the needs of each client.

Power operation

- UL listed. Control box.
- Adjustable supply voltages: 230/460/575 V.
- Operating frequency: 50/60 Hz.
- Max output power of the door drive unit: 5.5 kW.
- Max rated motor current: 20 A.
- External mains supply: 24 V DC / 0.5 A.
- Inputs: 24 V DC / 0.1 A.
- Relay contacts: 24 V DC / 1 A each.
- Permissible temperature range: 14... 104 F°.
- Humidity during operation: max 93% (non-condensing).



Pre-installed door

Door pre-installed and with all the hardware.



Closing

Closing with climatic and sanitary guarantees by using a canvas system without reinforcements and a hermetic guide.



Opening/closing speed

Opening and closing with speed shifter: maximum opening speed of 1.2 m/s.



Durability

Quality materials, offering great resistance and durability. Self-healing system.



Safety

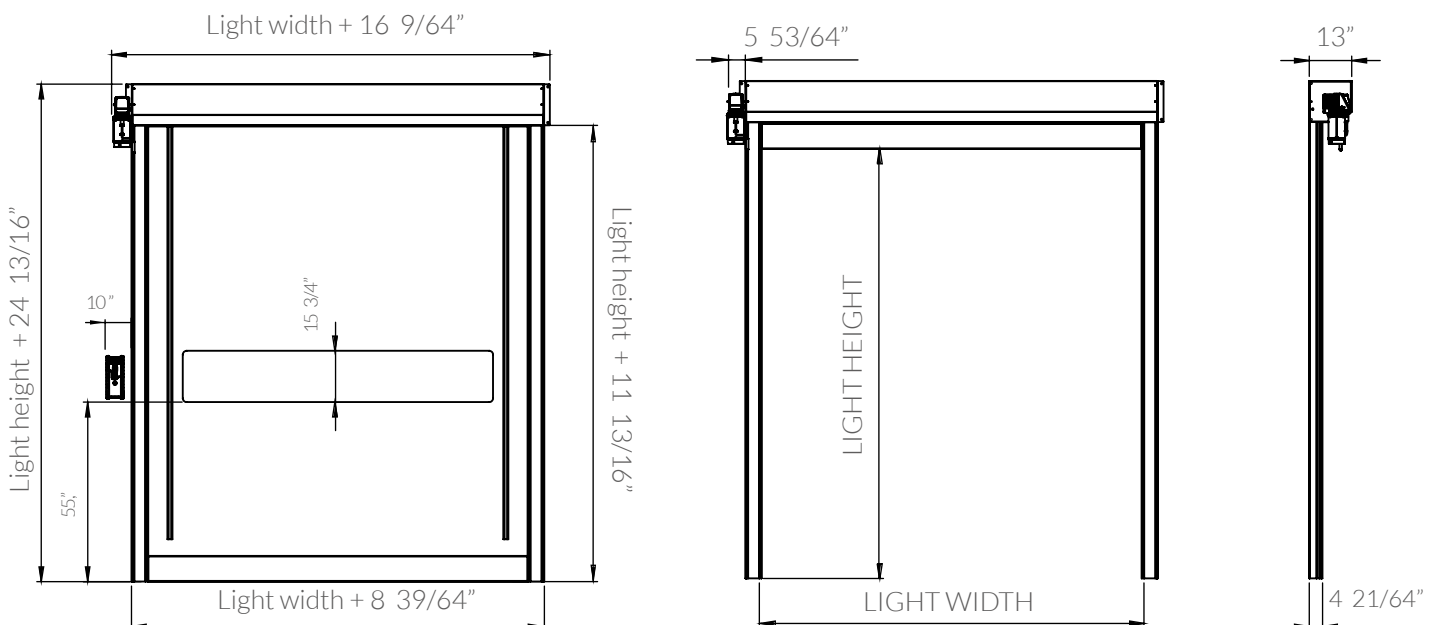
It complies with the safety standards required under EN13241-1 and complies with class 3 for wind resistance.



Easy assembly

Easy programming and regulation. Low maintenance.

Plans





info@kavidoors.us
+5790 NW 35TH AVE Miami,
FL 33142
kavidoors.us